

SALIBA



290/17-21 Romsey Street Waitara NSW

2  2  1 

This beautifully designed apartment offers a seamless blend of indoor and outdoor living, featuring an expansive terrace and private alfresco area perfect for relaxation and entertaining. Set within a well-maintained complex, it provides modern comforts and convenient access to local amenities in a peaceful setting.

Type : Unit
Price : \$ 840,000
Building Size : 178 sqm
View : <https://www.saliba.com.au/2901721-romsey-street-waitara-nsw-8181820/>

Internal Features:

- Spacious open-plan dining and lounge area, perfect for entertaining or relaxing
- Modern kitchen with a sleek finish, designed for both style and functionality
- Private master bedroom with a luxurious ensuite and ample storage space
- Additional bedroom equipped with built-in robes for

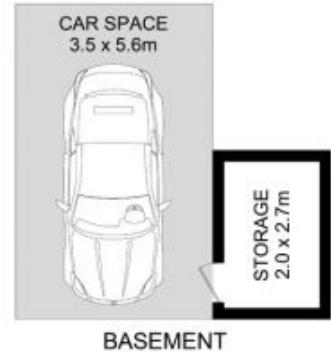
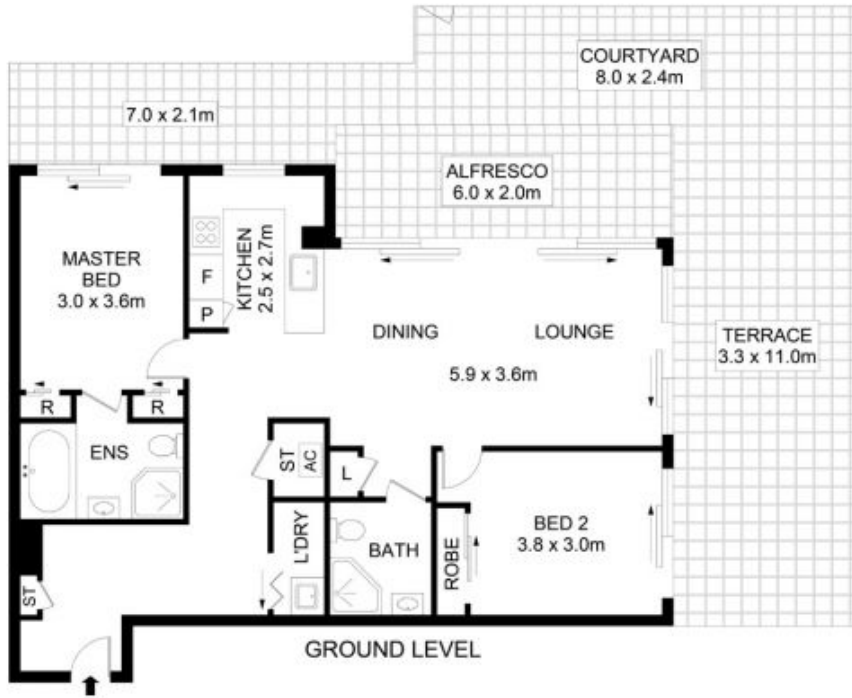
[For full version visit the website](#)



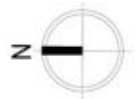
Anthony Chau
(02) 4504 8004



Iain Rosekilly
(02) 4504 8004



290/17-21 Romsey St, Waitara



Disclaimer- Floor Plan measurements are approximate and are for illustrative purposes only. While we cannot doubt the floor plans accuracy, we make no guarantee, warranty or representation as to the accuracy and completeness of the floor plan

TOTAL AREA 173 SQM