




SALIBA



2a Excelsior Road Mount Colah NSW

4  2  4 

This spacious and versatile home is ideal for any family. The fully renovated brick home offers bright interiors, modern kitchen, and a sun-lit child friendly backyard. The double glazed windows and insulated walls are just a few features that make this home stand out. Private yet convenient, it is located near bus transport and provides quick access to the M1.

- Expansive level land, gently elevated from the street
- Light-filled living room, dining/family flows to outdoors
- Spacious kitchen with quality appliances, loads of storage
- 4 generous size bedrooms, master with en-suite and walk in robe
- Polished timber floors and reverse cycle air conditioning
- Private patio, level lawns and low maintenance gardens

Type : House

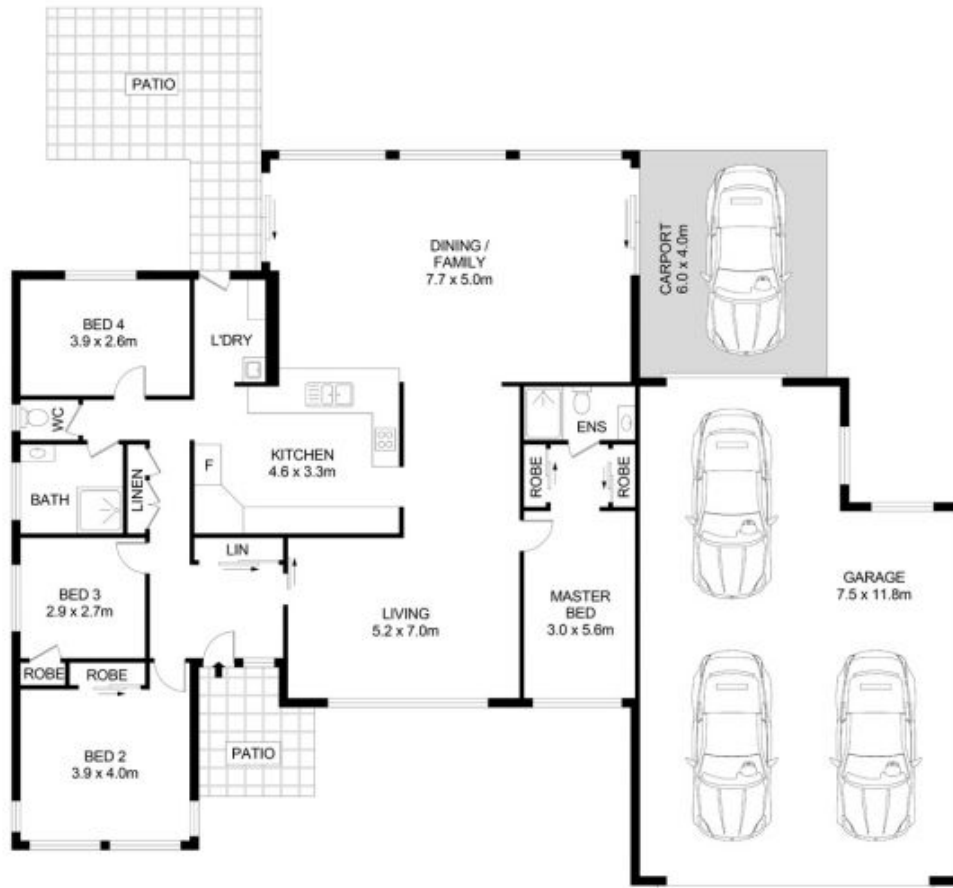
View : <https://www.saliba.com.au/2a-excelsior-road-mount-colah-nsw-7271670/>



Angelina Sekuli
02 4504 8004

[For full version visit the website](https://www.saliba.com.au)

<https://www.saliba.com.au>



2A Excelsior Rd, Mount Colah



Disclaimer- Floor Plan measurements are approximate and are for illustrative purposes only. While we cannot doubt the floor plans accuracy, we make no guarantee, warranty or representation as to the accuracy and completeness of the floor plan

INTERNAL AREA : 234 SQM