



HORNSBY

26 Ronald Street

Family home in tranquil treetop setting



Immersed in leafy surrounds, this private family residence is located within a peaceful pocket of Hornsby and enjoys elevated positioning in a tranquil, treetop setting. Boasting an easy maintenance floorplan and a north-east facing rear which includes a private, sparkling in-ground pool, this exceptional home is ideally located within short distance of Hornsby Westfield shopping and dining precinct, both Hornsby Station and Waitara Station, multiple restaurants and amenities, and top schooling options. Move in ready, this home presents an ideal lifestyle opportunity for an array of families, including first home buyers.

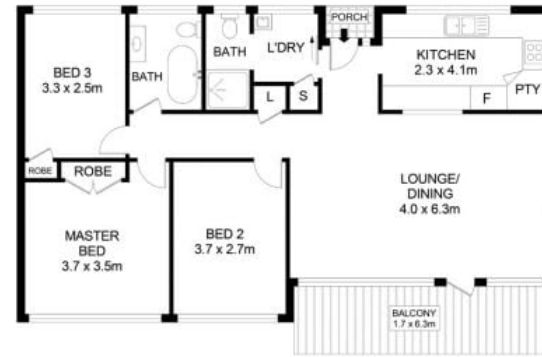
- Large lounge and dining area that flows to private entertaining balcony
- Treetop setting with balcony capturing valley views
- Three good sized bedrooms with built ins to two
- Renovated bathrooms, main with free standing bath
- Inground pool to rear captures near northerly light
- Split system air-conditioning, floorboards throughout
- Off street parking for two cars
- Entertaining gazebo to the rear, perfect for parties through summer!

For further information please contact Josh Saliba on 0400 231 424.

We have obtained all information in this document from sources we believe to be reliable, however, we cannot guarantee its accuracy. Prospective purchasers are advised to carry out their own investigations.

Josh Saliba 0400 231 424

SALIBA Estate Agents



SITE PLAN (NOT TO SCALE)

Disclaimer- Floor Plan measurements are approximate and are for illustrative purposes only. While we cannot doubt the floor plans accuracy, we make no guarantee, warranty or representation as to the accuracy and completeness of the floor plan

INTERNAL AREA	90 SQM
EXTERNAL AREA	12 SQM
TOTAL AREA	102 SQM