



# HORNSBY

93/121-133 Pacific Highway

## Building record sold by Justin Khoury

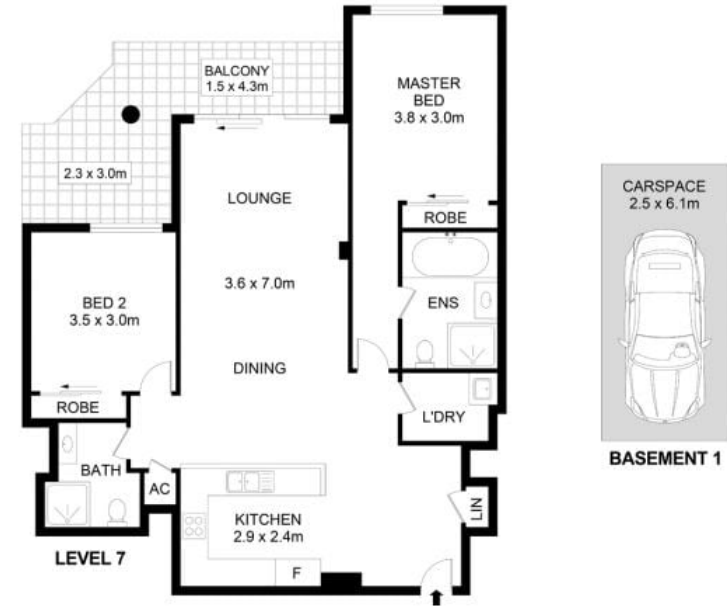
🛏️ 2 🚿 2 🚗 1

Positioned in the sought-after "Polaris" building, this well-maintained apartment boasts resort-like facilities for residents to enjoy, including a heated swimming pool & spa bath, fully equipped gymnasium, table tennis/games room as well as a roof top terrace. Boasting a convenient location in the heart of Hornsby, this residence is footsteps way from Hornsby Westfield shopping and dining precinct, Hornsby Station which allows easy access to Ryde, Chatswood & Sydney CBD, frequent bus routes and top schooling options.

- Two spacious bedrooms with mirrored built in robes
- Kitchen with granite benchtops and gas cooking
- Open plan living arrangement flows to balcony
- Sunlit interiors offering scenic district views
- Internal laundry, ducted air-conditioning
- New vanities to both bathrooms, separate bath and shower
- Elevated position on the 7th floor with dual lift access
- Secure complex with intercom and undercover parking

For further information please contact Josh Saliba on 0400 231 424.

We have obtained all information in this document from sources we believe to be reliable, however, we cannot guarantee its accuracy. Prospective purchasers are advised to carry out their own investigations.



93/121-133 Pacific Highway, Hornsby

Disclaimer- Floor Plan measurements are approximate and are for illustrative purposes only. While we cannot doubt the floor plans accuracy, we make no guarantee, warranty or representation as to the accuracy and completeness of the floor plan.



INTERNAL AREA > 100 SQM  
GARAGE > 14 SQM  
TOTAL AREA > 114 SQM

Josh Saliba 0400 231 424

**SALIBA** Estate Agents