



# PARRAMATTA

63/64-66 Great Western

## Located in the Heart of Parramatta

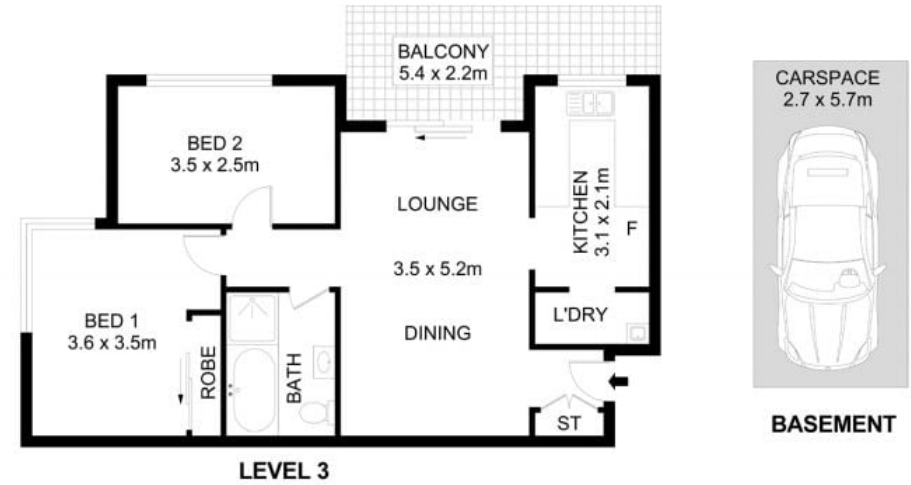


Just a 10 minute walk to Parramatta Station and the fringe of the CBD and only 5 minutes to Westfield Shopping Centre, this centrally positioned property is also surrounded by a selection of specialty shops, restaurants and reputable schools. It provides easy access to Parramatta Park, numerous recreational facilities and main arterial roads to all directions.

- Spacious combined living/dining area
- Spacious balcony off the living area
- Main bedroom with built in wardrobe
- Oversized second bedroom
- Well maintained kitchen with ample storage
- Basement car space

For further information please contact Saliba Estate Agents 02 4504 8004.

We have obtained all information in this document from sources we believe to be reliable, however, we cannot guarantee its accuracy. Prospective tenants are advised to carry out their own investigations.



63/64-66 Great Western Highway, Parramatta

Disclaimer- Floor Plan measurements are approximate and are for illustrative purposes only. While we cannot doubt the floor plans accuracy, we make no guarantee, warranty or representation as to the accuracy and completeness of the floor plan



INTERNAL AREA	58 SQM
EXTERNAL AREA	9 SQM
TOTAL AREA	67 SQM

Josh Saliba 0400 231 424 Saliba Estate Agents 0450 178 002