



WAITARA

24/4-6 Park Avenue

Modern apartment in central setting

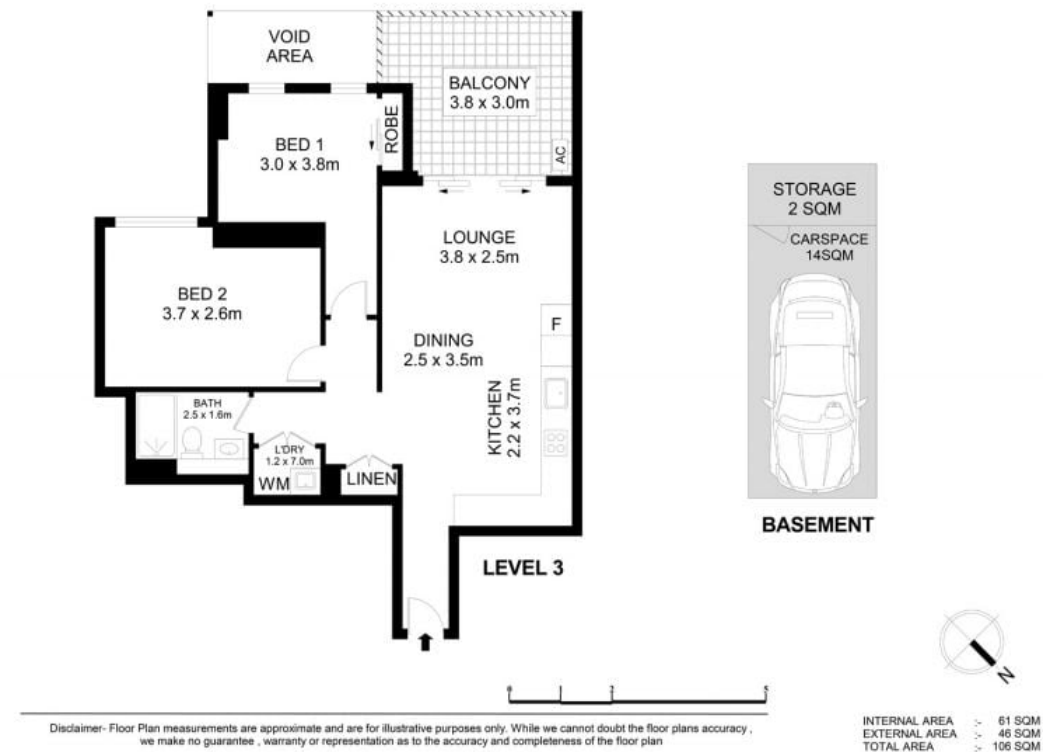
 2  1  1

Boasting a convenient location, this residence is situated within walking distance to a range of amenities, including Waitara Station, Hornsby Station, Hornsby Westfield Shopping and Dining precinct, and a range of top schooling options including Waitara Public School, Barker College, Hornsby Girls High School and St Leo's Catholic College. With elevated positioning on the third floor, this apartment offers a lifestyle of convenience and comfort.

- Two spacious bedrooms, built in robe to main
- Open plan living and dining arrangement
- Private balcony capturing district views
- Kitchen with gas cooking and stainless steel appliances
- Fully tiled bathroom with modern finishes
- Modern interiors, split system air conditioning
- Internal laundry, linen cupboard and storage
- NBN internet available
- Walking distance to Westfield and Hornsby train station

For further information please contact Saliba Estate Agents 02 4504 8004.

We have obtained all information in this document from sources we believe to be reliable, however, we cannot guarantee its accuracy. Prospective tenants are advised to carry out their own investigations.



Josh Saliba 0400 231 424 Saliba Estate Agents 0450 178 002

SALIBA Estate Agents