



WAITARA

26/4-6 Park Avenue

Near new apartment in convenient setting

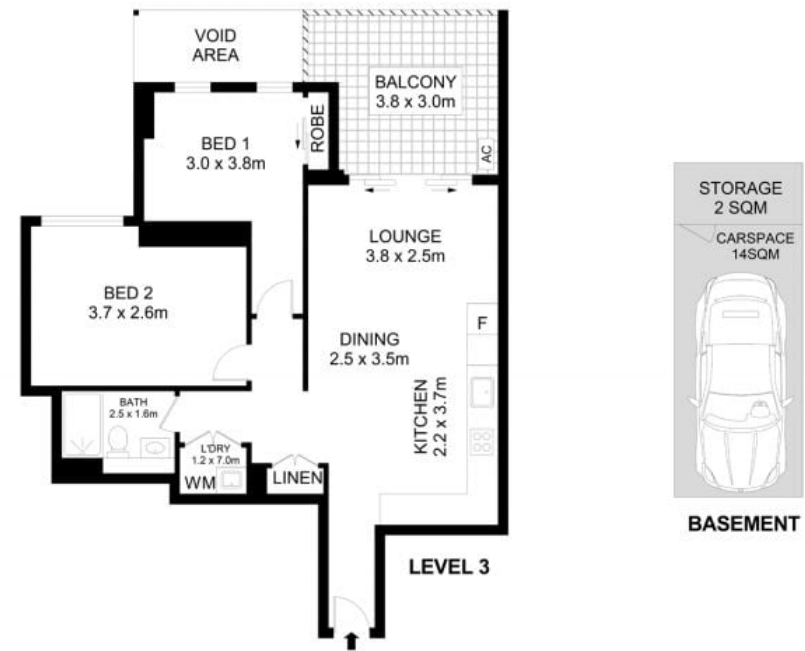


Positioned in a contemporary and quality complex built in 2016, this modern apartment offers a lifestyle of convenience to an array of buyers, including investors and first home buyers alike. Positioned in a leafy street close to an array of amenities, including Hornsby Westfield shopping and dining precinct, Waitara Station & Hornsby station which allow easy access to Ryde, Chatswood & Sydney CBD, and top schooling options, this residence enjoys a sunny, near north aspect and is filled with ample natural light.

- Sun-lit, open plan living and dining arrangement
- Covered balcony flows seamlessly from indoor setting
- Two spacious bedrooms with built in robes
- Ensuite to master and full main bathroom
- Internal laundry, split system air-con
- Single car space in basement with additional storage
- Level 3 positioning in secure, well maintained complex

For further information please contact Josh Saliba on 0400 231 424.

We have obtained all information in this document from sources we believe to be reliable, however, we cannot guarantee its accuracy. Prospective purchasers are advised to carry out their own investigations.



24/4-6 Park Ave, Waitara

Disclaimer- Floor Plan measurements are approximate and are for illustrative purposes only. While we cannot doubt the floor plans accuracy, we make no guarantee, warranty or representation as to the accuracy and completeness of the floor plan

INTERNAL AREA 61 SQM
EXTERNAL AREA 46 SQM
TOTAL AREA 106 SQM

Josh Saliba 0400 231 424

SALIBA Estate Agents