



HORNSBY

23 Gleneagles Crescent

Sold for street record!



A true paradise made for family living, this residence is positioned over 1163sqm of land, surrounded by established gardens and captures a serene bush outlook. Sprawled over three levels, this child-friendly home lends itself to the growing family, with a peaceful cul-de-sac location that's within close range to an array of amenities, including Hornsby Hospital, Hornsby Westfield shopping and dining precinct and frequent bus routes. This home is also located in the school catchment of Waitara Public School, with easy access to Hornsby Girls High School, Asquith Boys High School, Asquith Girls High School & Barker College.

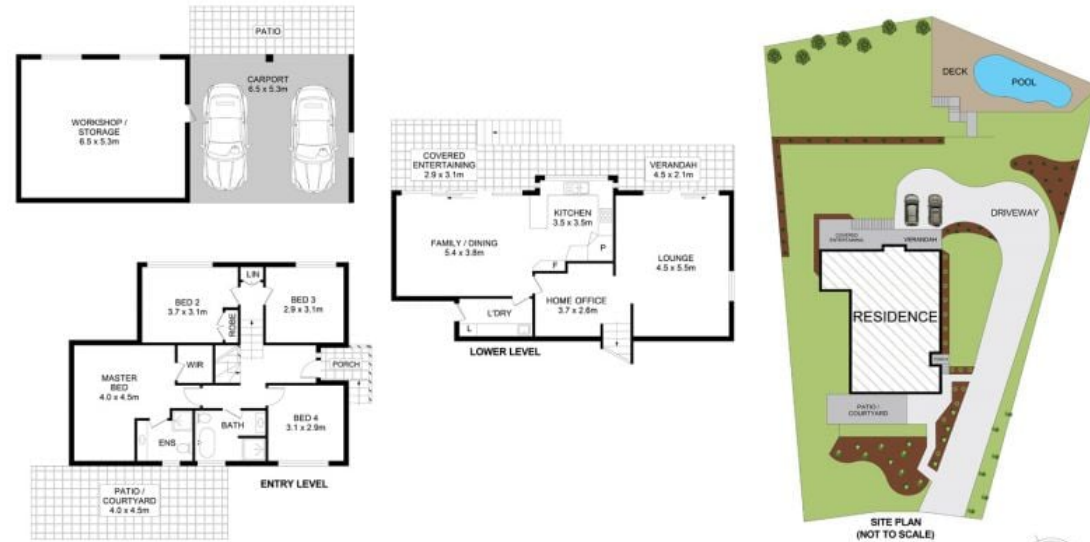
- Four spacious bedrooms, ensuite and walk in robe to master
- Versatile floorplan with separate living, dining and office areas
- Covered entertaining space captures bush outlook
- Freshly painted interiors filled with ample natural light
- Effortlessly blended indoor/outdoor living arrangement
- Newly renovated main bathroom, internal laundry
- Ceiling fans, air-conditioning, 9kW solar system
- Large windows overlook lawns and sparkling pool
- Double carport with additional off street parking
- Ample storage with large workshop

For further information please contact Josh Saliba on 0400 231 424.

We have obtained all information in this document from sources we believe to be reliable, however, we cannot guarantee its accuracy. Prospective purchasers are advised to carry out their own investigations.

Josh Saliba 0400 231 424

SALIBA Estate Agents



23 Gleneagles Crescent, Hornsby

Disclaimer- Floor Plan measurements are approximate and are for illustrative purposes only. While we cannot doubt the floor plans accuracy, we make no guarantee, warranty or representation as to the accuracy and completeness of the floor plan.

INTERNAL AREA :- 192 SQM
EXTERNAL AREA :- 101 SQM
TOTAL AREA :- 293 SQM
LAND SIZE :- 1163 SQM