



HORNSBY

105/208-226 Pacific Highway

Spacious and central apartment

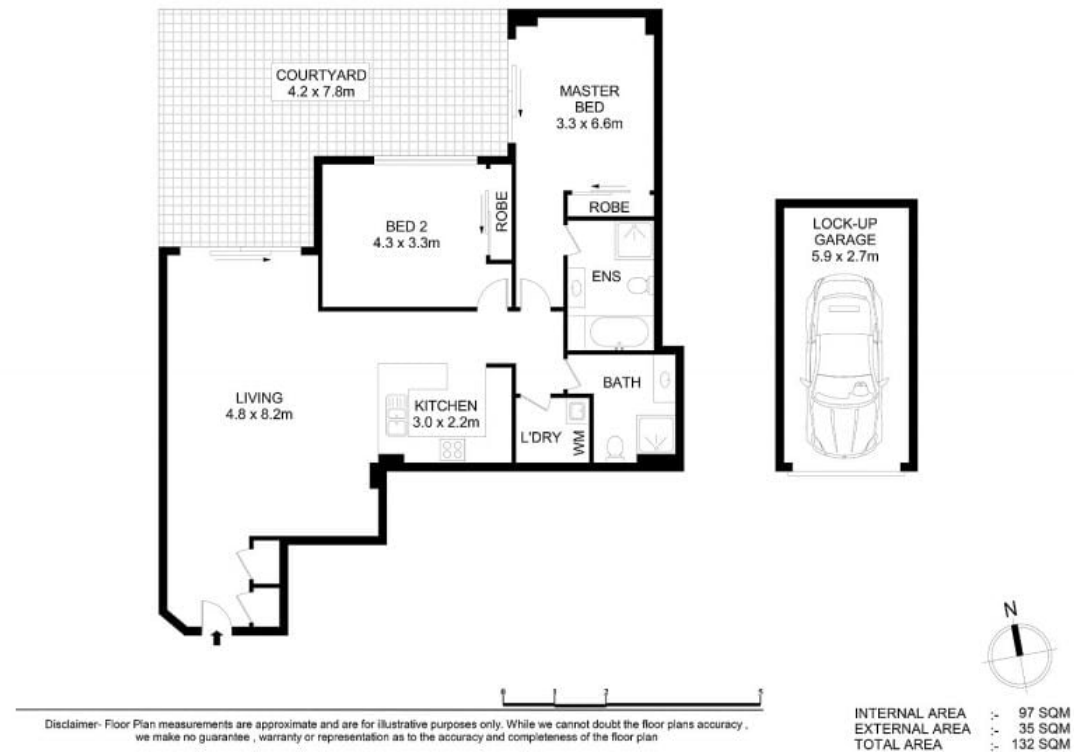


Offering a spacious outdoor setting, this apartment boasts quality finishes and presents an easy maintenance layout. Containing a large and private courtyard, this home is set within a secure complex which has access to gym & pool facilities. Set in the heart of Hornsby, this apartment is a short stroll away from Hornsby Westfield shopping and dining precinct, Hornsby Station, common bus routes and an array of restaurants and amenities.

- Two spacious bedrooms with ensuite to main
- Open plan lounge and dining arrangement
- Open layout flows to outdoor living
- Built in wardrobes to both bedrooms
- Secure underground parking, large courtyard
- Combined carpet and timber flooring

For further information please contact Saliba Estate Agents 02 4504 8004.

We have obtained all information in this document from sources we believe to be reliable, however, we cannot guarantee its accuracy. Prospective tenants are advised to carry out their own investigations.



Josh Saliba 0400 231 424