



THORNLEIGH

32 Duffy Avenue

Centrally located family living

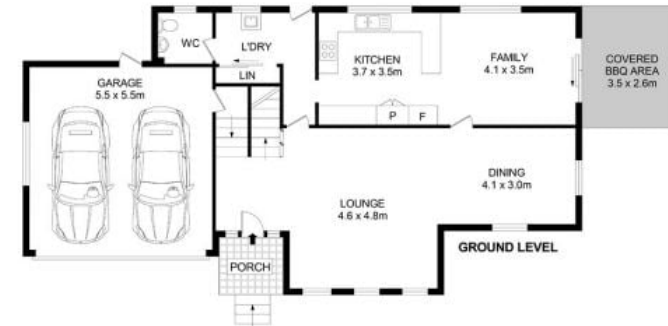


Set in a prized location of Thornleigh around the corner from parks, shops and transport, this dual level residence offers a lifestyle of easy maintenance and convenience. With modern and well-maintained interiors, this ready to move in opportunity opens itself to an array of families with plenty of room to grow. Boasting multiple location benefits being a 3 minute drive to Thornleigh Station, as well as offering easy access to Thornleigh Market Place and various restaurants and amenities. Top schooling options are nearby, including Loreto Normanhurst, Normanhurst Boys High School, Barker College, and St Leo's Catholic College.

- Dual level brick residence with convenient positioning
- Four spacious bedrooms, main with ensuite and walk in
- Kitchen with ample storage and gas cooking
- Versatile living arrangement with separate family, lounge and dining areas
- Main bathroom with separate bath and shower
- Internal laundry, additional W/C on lower level
- Both covered and open entertaining areas to rear
- Double lock up garage with internal access

For further information please contact Josh Saliba on 0400 231 424.

We have obtained all information in this document from sources we believe to be reliable, however, we cannot guarantee its accuracy. Prospective purchasers are advised to carry out their own investigations.



Disclaimer- Floor Plan measurements are approximate and are for illustrative purposes only. While we cannot doubt the floor plans accuracy, we make no guarantee, warranty or representation as to the accuracy and completeness of the floor plan.



INTERNAL AREA : 161 SQM
EXTERNAL AREA : 15 SQM
TOTAL AREA : 176 SQM

Josh Saliba 0400 231 424

SALIBA Estate Agents