



# ASQUITH

39/325-331 Peats Ferry Road

## Spacious apartment in ideal setting



This modern and good as new apartment offers convenient positioning from an elevated aspect in the secure, Omega Apartments complex. With airy interiors and ample natural light, this contemporary retreat is ideally set 350 metres from Asquith train station, a short walk from Coles Supermarket, and boasts close proximity to Hornsby Shopping and Dining precinct, as well as various cafes and restaurants. A choice of top schooling options are nearby, including Asquith Boys High School, St Patrick's Catholic Primary School, Hornsby Girls High School, Barker College & St Leo's Catholic College.

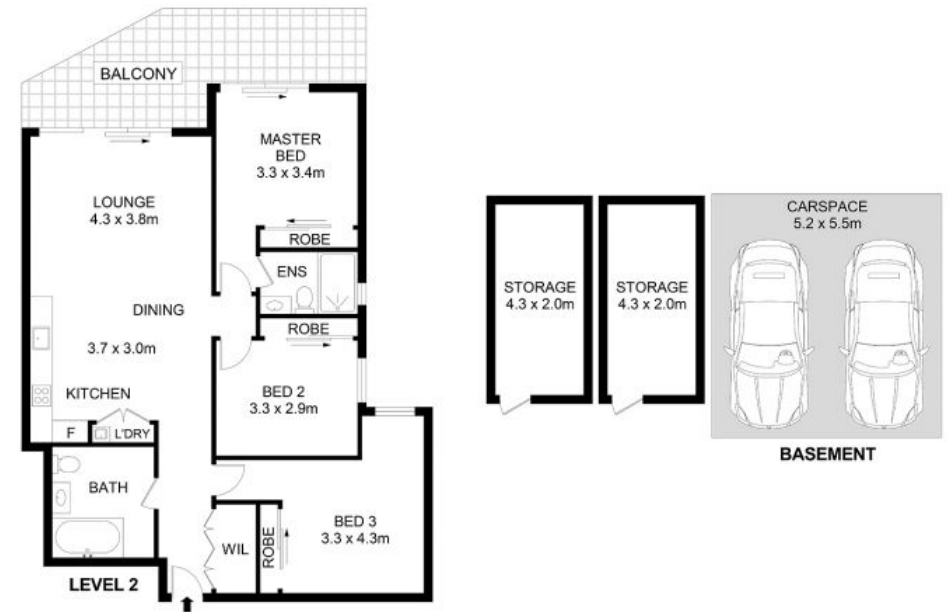
- Three good-sized bedrooms, each with built-ins and ensuite to master
- Open plan kitchen with gas cooking and quality stainless steel appliances
- Flowing and open floorplan with great indoor/outdoor offering
- Covered balcony leads from main bedroom and lounge area
- Contemporary finishes throughout, neutral colour palette
- Secure parking for two cars, additional 2 storage cages
- Pet friendly complex suitable for an array of buyers, including young families, executives or retirees who are after an easy care lifestyle without compromise

For further information please contact Josh Saliba on 0400 231 424.

We have obtained all information in this document from sources we believe to be reliable, however, we cannot guarantee its accuracy. Prospective purchasers are advised to carry out their own investigations.

Josh Saliba 0400 231 424

**SALIBA** Estate Agents



39/325-331 Peats Ferry Rd, Asquith

Disclaimer- Floor Plan measurements are approximate and are for illustrative purposes only. While we cannot doubt the floor plans accuracy, we make no guarantee, warranty or representation as to the accuracy and completeness of the floor plan.

