



## MOUNT COLAH

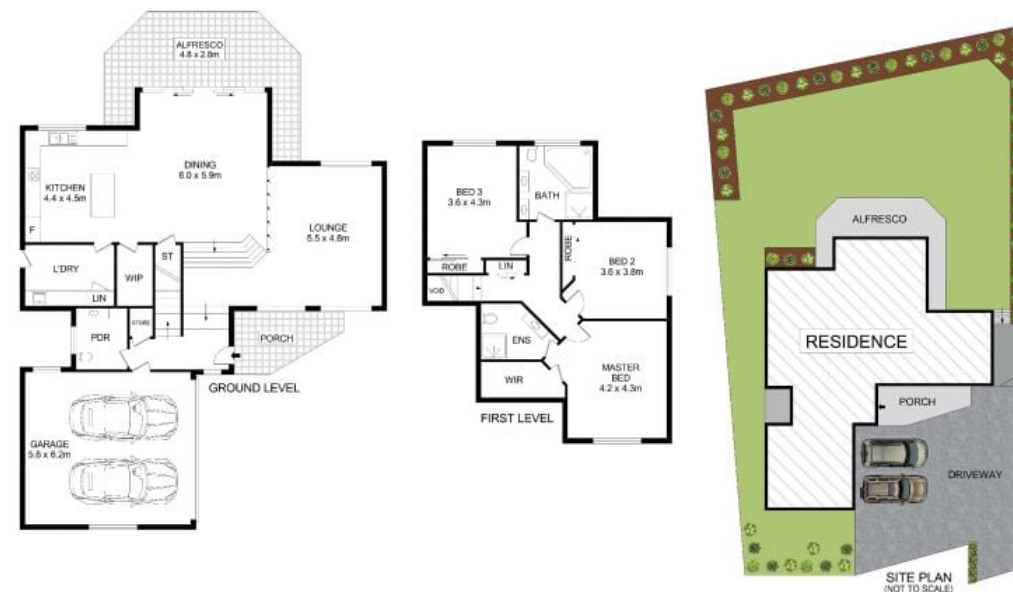
549A Pacific Highway

### Modern home central to amenities

 3  2  2

Sold off market!

Family home with well presented interiors, boasting close proximity to a range of amenities including Mount Colah Station, restaurants and amenities and including easy access to Hornsby Westfield shopping and dining precinct, the M1 motorway and NorthConnex. Top schooling options are nearby, including Mount Colah Public School, Asquith Public School, Asquith Girls High School & Asquith Boys High School.



### 549A Pacific Highway, Mount Colah

#### Disclaimer

Floor Plan measurements are approximate and are for illustrative purposes only. While we cannot doubt the floor plans accuracy, we make no guarantee, warranty or representation as to the accuracy and completeness of the floor plan.

Internal Size : 195 sqm  
[Approx]



Josh Saliba 0400 231 424

**SALIBA** Estate Agents