



WAHROONGA

1/1707 Pacific Highway

Charming apartment in boutique block of four

 3  1  1

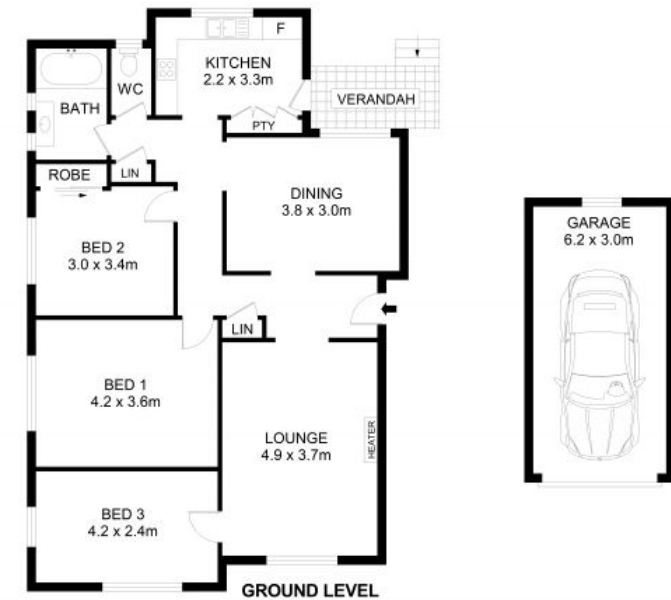
Boasting character and charm, this classic apartment is nestled within a boutique complex of four and offers convenient positioning, with easy access to M1, transport, shops and multiple top schooling options including Wahroonga Preparatory School, Abbotsleigh, Barker College, St Leo's Catholic College and Knox Grammar. With ground floor access, this home is a rare offering for investors, first home buyers, and young families to secure positioning in an outstanding location.

- Three generous bedrooms, North facing verandah
- Renovated gas kitchen with stainless steel appliances
- Separate living and formal dining, ample natural light
- Renovated and modern bathroom equipped with bath
- Storage options with built in robe and linen cupboards
- Double glazed windows, lock up garage and excellent parking
- Level backyard common area with manicured lawns

For access, best parking is in Isis Street, then walk down to the property.

For further information please contact Josh Saliba on 0400 231 424.

We have obtained all information in this document from sources we believe to be reliable, however, we cannot guarantee its accuracy. Prospective purchasers are advised to carry out their own investigations.



1/1707 Pacific Highway, Wahroonga

Disclaimer- Floor Plan measurements are approximate and are for illustrative purposes only. While we cannot doubt the floor plans accuracy, we make no guarantee, warranty or representation as to the accuracy and completeness of the floor plan.

Unit : 97 sqm
Balcony : 3 sqm
Garage : 18 sqm
Total Size : 118 sqm
(Approx)



Josh Saliba 0400 231 424

SALIBA Estate Agents