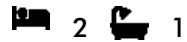




THORNLEIGH

9a Paling Street

Private flat in prime location



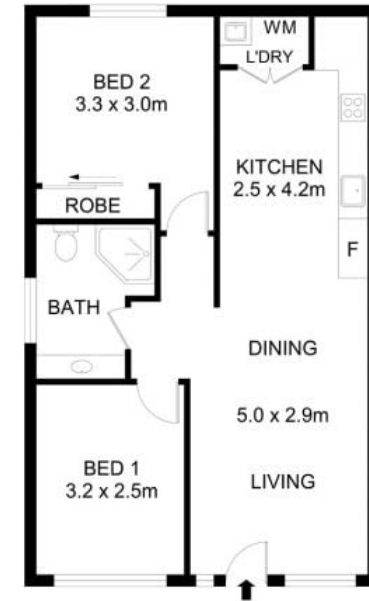
Boasting a desirable location that's central to amenities, this spacious and modern flat offers comfortable and easy-maintenance living. Well presented in its design, this home is within close range of various restaurants and shops, and presents easy access to Pennant Hills Road, Thornleigh Station and common bus routes.

- Two spacious bedrooms, main with built in robe
- Gas kitchen with stainless steel appliances
- Open plan living and dining arrangement
- Internal laundry, modern finishes, street parking

* Water included in rent

For further information please contact Saliba Estate Agents 02 4504 8004.

We have obtained all information in this document from sources we believe to be reliable, however, we cannot guarantee its accuracy. Prospective tenants are advised to carry out their own investigations.



Disclaimer- Floor Plan measurements are approximate and are for illustrative purposes only. While we cannot doubt the floor plans accuracy, we make no guarantee, warranty or representation as to the accuracy and completeness of the floor plan.



Saliba Estate Agents 0450 178 002

SALIBA Estate Agents