



ASQUITH

43/309-311 Peats Ferry Road

Light filled apartment with easy access to amenities

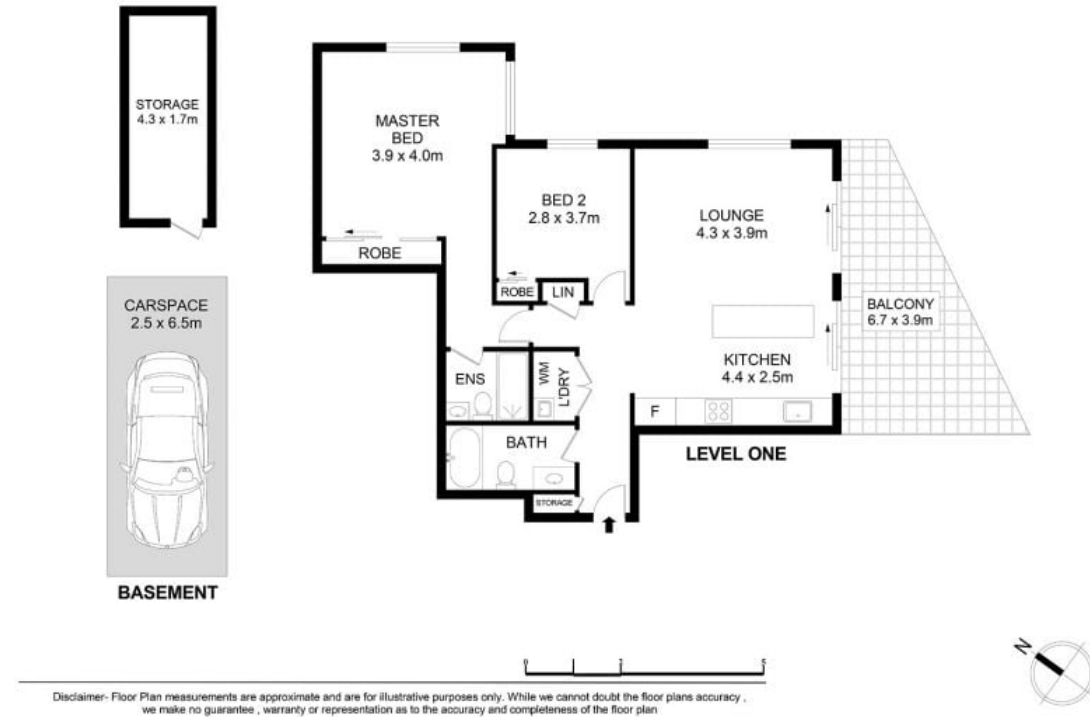
 2  2  1

Positioned in a secure, modern complex with quality finishes and fixtures throughout, this near new apartment offers a lifestyle of convenience and easy maintenance. Offering an unbeatable location, this home is moments away from common bus routes, Asquith Train Station, Coles Shopping centre, cafes and many top schooling options including St Patrick's Catholic Primary School, Asquith Public School, Asquith Boys Highschool, and is within the Hornsby North School Catchment. Hornsby Westfield and Hornsby Station are just a short drive away.

- Spacious, open plan living and dining arrangement
- Generously sized bedrooms, ensuite to master
- Kitchen with gas cooking and stainless steel appliances
- Spacious entertaining balcony, internal laundry with dryer
- Great storage with built ins to bedrooms and storage cage
- Security building with video intercom system, elevator access

For further information please contact Saliba Estate Agents 02 4504 8004.

We have obtained all information in this document from sources we believe to be reliable, however, we cannot guarantee its accuracy. Prospective tenants are advised to carry out their own investigations.



Josh Saliba 0400 231 424

SALIBA Estate Agents