



# THORNLEIGH

1 Duffy Avenue

## Great opportunity in central location

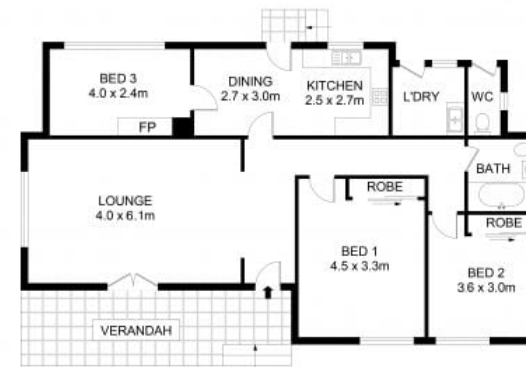


Set in central Thornleigh with easy and direct access to a range of amenities, shops and transport, this full brick, three bedroom home prizes the perfect scope for one to renovate to their taste, creating a great opportunity for first home buyers and those looking to put their own personal touches on a home. Surrounded by trees and lush greenery, creating a sense of privacy from the street, this home offers ideal traveling options, with quick access to Pennant Hills Road and Thornleigh Train Station.

- Three bedrooms with built in robes to two
- Spacious lounge area with separate entry
- Updated kitchen combined with dining
- Full bathroom, separate second toilet
- Ceiling fans, sensor lights, fireplace
- Sun-lit front verandah, rear car space

For further information please contact Josh Saliba on 0400 231 424.

We have obtained all information in this document from sources we believe to be reliable, however, we cannot guarantee its accuracy. Prospective purchasers are advised to carry out their own investigations.



SITE PLAN  
(NOT TO SCALE)

### 1 Duffy Ave, Thornleigh

Disclaimer  
Floor Plan measurements are approximate and are for illustrative purposes only. While we cannot doubt the floor plans accuracy, we make no guarantee, warranty or representation as to the accuracy and completeness of the floor plan

Internal Size : 109 sqm  
Land Size : 663 sqm

Josh Saliba 0400 231 424

**SALIBA** Estate Agents