



# THORNLEIGH

17 Silver Ash Way

## Modern home nestled in boutique complex

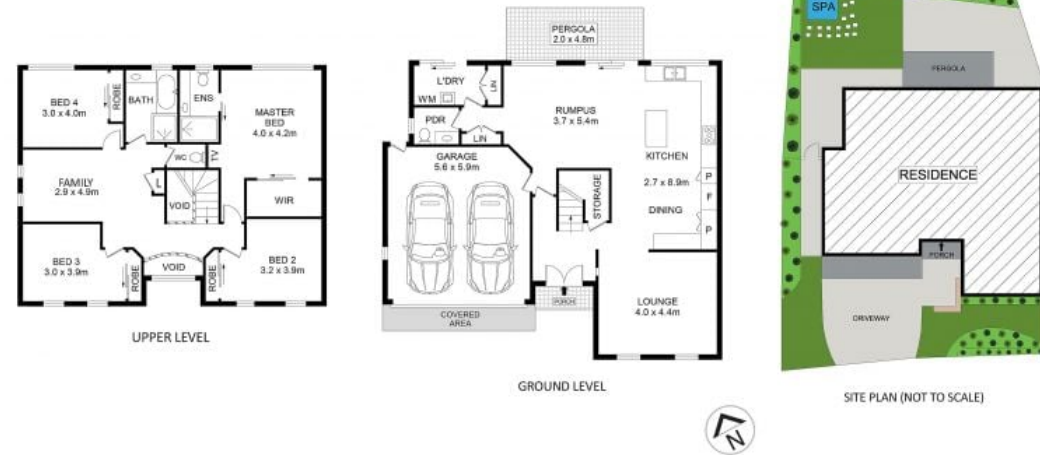
4 2 2

Featuring modern interiors and a seamlessly blended indoor/outdoor living arrangement, this well-kept home offers a low maintenance, resort-like lifestyle with use of pool, parkland and clubhouse facilities. Nestled in Wild Ash Grove Estate, the home enjoys a peaceful suburban location that's within close proximity to Westleigh Shopping Village and bus stops, with easy access to Pennant Hills Road.

- 4 spacious bedrooms each with built-ins, en-suite and walk in robe to master
- Multiple living arrangements, with formal lounge, family room and rumpus
- Open-plan, modern kitchen with gas cooking and ample storage
- 2 bathrooms, freestanding bath to main, and powder room
- Secure, easy maintenance backyard including spa, North-West facing
- Internal laundry, multiple storage cupboards, ducted air-conditioning
- Covered entertaining area, double-lock up garage with internal access

For further information please contact Josh Saliba on 0400 231 424.

We have obtained all information in this document from sources we believe to be reliable, however, we cannot guarantee its accuracy. Prospective purchasers are advised to carry out their own investigations.



## 17 Silver Ash Way Thornleigh

Internal size : 216 sqm

### DISCLAIMER

DIMENSIONS ARE APPROXIMATE AND SHOULD ONLY BE USED AS A GUIDE  
THEY ARE NOT TO SCALE AND NO LIABILITY BE ACCEPTED

Josh Saliba 0400 231 424

**SALIBA** Estate Agents