





# WESTLEIGH

7 Akoonah Close

## Spacious home peacefully positioned amidst bush setting

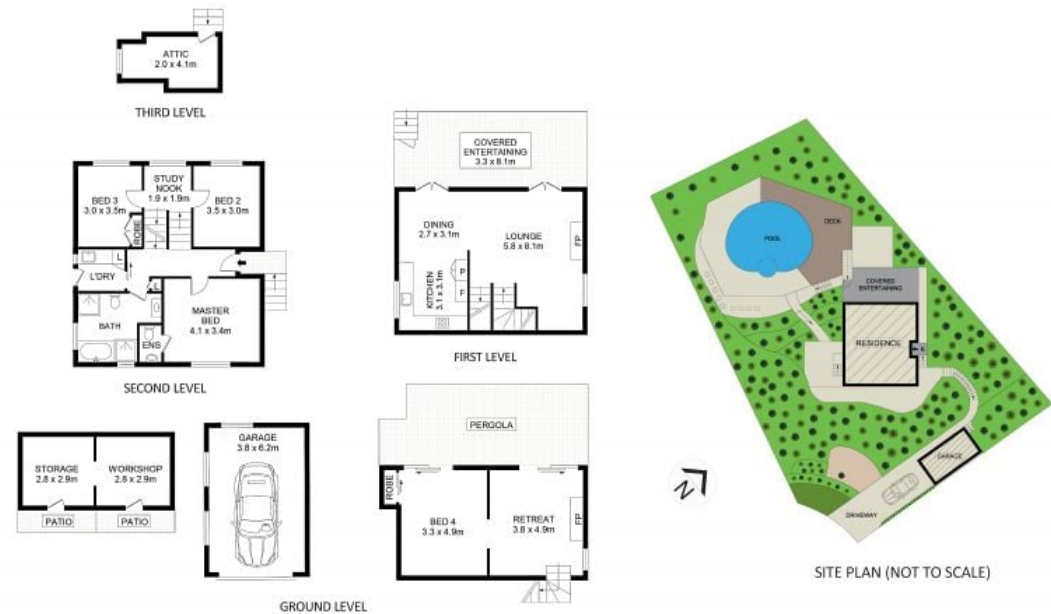
4 2 2

Privately nestled in tightly held Westleigh, this multi-level residence boasts a stunning bush backdrop and offers many living arrangements. Including a secluded pool and spacious entertaining balcony, this home will suit the needs of both the established and growing families, and those that love to entertain. Tucked away in a cul-de-sac, this home enjoys suburban positioning that's within close proximity to bus stops, and is a short drive to Westleigh Village.

- 4 spacious bedrooms, 3 with BIR's and an ensuite to main
- Combined living and dining which flow to outdoor entertaining
- Updated kitchen with stainless steel appliances
- Modern, fully-tiled bathroom and ensuite
- Additional retreat located downstairs, with private setting
- Peaceful, bushland setting that enjoys the presence of native wildlife
- Sparkling pool with spa, split-system air conditioning
- Ceiling fans, functional fireplaces, ample storage space with attic
- Lock up garage for 1 car, with off-street parking available

For further information please contact Josh Saliba on 0400 231 424.

We have obtained all information in this document from sources we believe to be reliable, however, we cannot guarantee its accuracy. Prospective purchasers are advised to carry out their own investigations.



## 7 Akoonah Close Westleigh

DISCLAIMER

DIMENSIONS ARE APPROXIMATE AND SHOULD ONLY BE USED AS A GUIDE. THEY ARE NOT TO SCALE AND NO LIABILITY BE ACCEPTED.

Internal Size: 209.5 sqm  
Land Size : 697.8 sqm

Josh Saliba 0400 231 424 Marcus Bentivoglio 0428898262

**SALIBA** Estate Agents